



A Computer Generated Image of Britannia House and Earl's House

WELCOME TO THE DEVELOPMENT OF BRITANNIA HOUSE AND GRANVILLE ROAD NEWSLETTER

Skillcrown Homes is proud to be delivering the development of Britannia House and the former garages site on Granville Road – an exciting project set to transform the immediate area into a modern, high-quality residential community.

The development will deliver 40 new one- and two-bedroom apartments, providing much-needed homes for local people.

This regeneration represents a significant investment in the future of Maidstone. Our goal is not only to create new housing, but also to enhance the local environment and establish a safe, welcoming place for residents to call home.

Through this newsletter, we will keep you informed on project progress, upcoming works and the steps we are taking to minimise disruption during construction.

We look forward to sharing key milestones as the project develops and to delivering homes that will benefit the Maidstone community for generations to come.

**For Future Updates,
Please Scan the
QR Code Below:-**



If you would like to receive future newsletters electronically, please email:-

info@skillcrown.co.uk

Skillcrown Head Office

Tel: 020 8462 3030

Email: info@skillcrown.co.uk



THE FORMER GARAGES SITE (now known as Earl's House)

What we've done so far:-

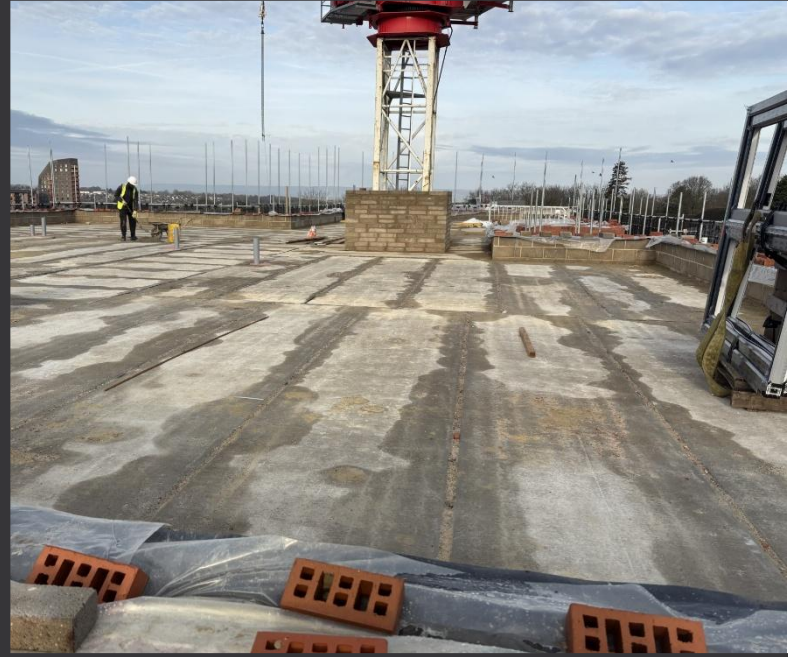
Over the last month, this is what has been done to date:-

- The cladding works are progressing.
- The window installation is complete.
- The drylining works have progressed.

Looking forward:-

Over the next month, this is what can be expected:-

- The carpentry works will continue.
- Preparation works for decorating will continue.



BRITANNIA HOUSE

What we've done so far:-

Over the last month, this is what has been done to date:-

- The final precast hollowcore slabs have been installed.
- The roof works have been progressing.

Looking forward:-

Over the next month, this is what can be expected:-

- The mechanical and electrical works will commence.
- Screeding to apartments will complete this month.

IN SUMMARY

The Granville Road development will deliver 40-one-and-two-bedroom apartments, together with associated landscaping and car parking, providing high-quality homes for the Maidstone community.

WHO ARE SKILLCROWN?

Skillcrown is a family-run construction and development company with over 30 years' experience delivering high-quality homes across London and the South East. We specialise in working in partnership with Housing Associations, Local Authorities and private clients to provide affordable housing, mixed-use schemes and community-focussed developments. With a proven track record in design, build and delivery, we pride ourselves on combining technical expertise with a collaborative approach. Our aim is to create well-designed, sustainable homes that add lasting value to local communities.



SCAN ME!

